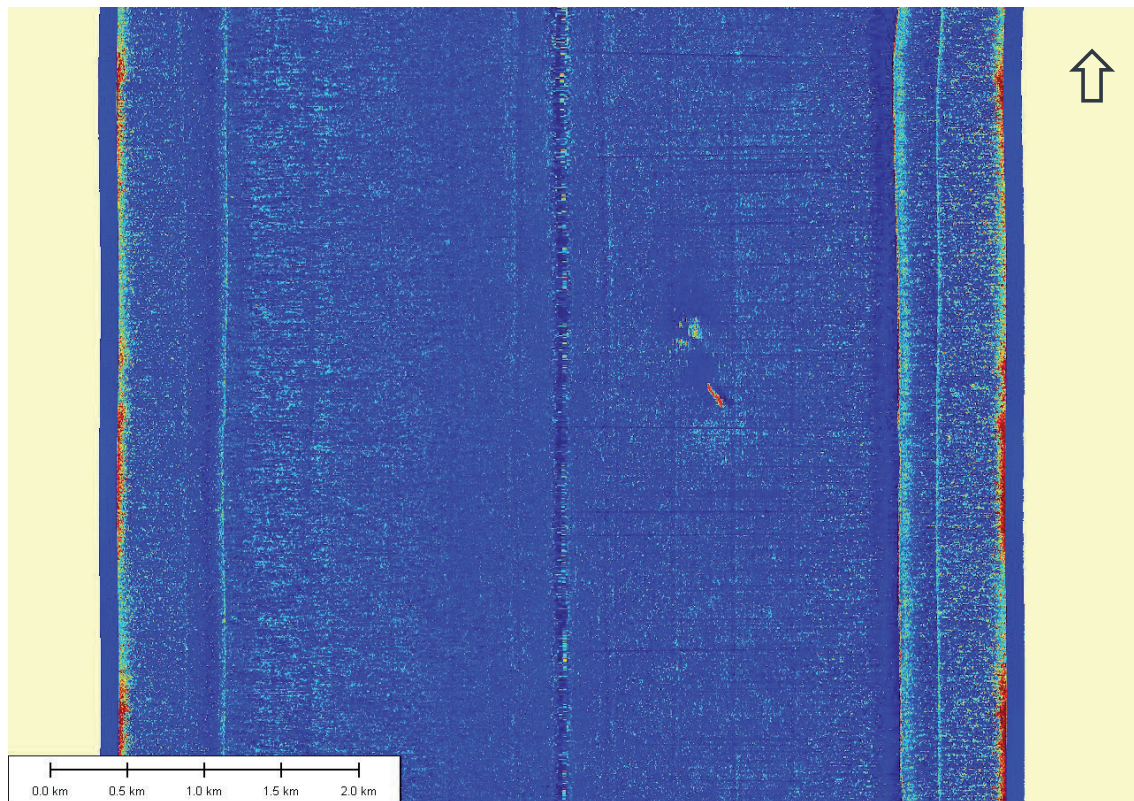
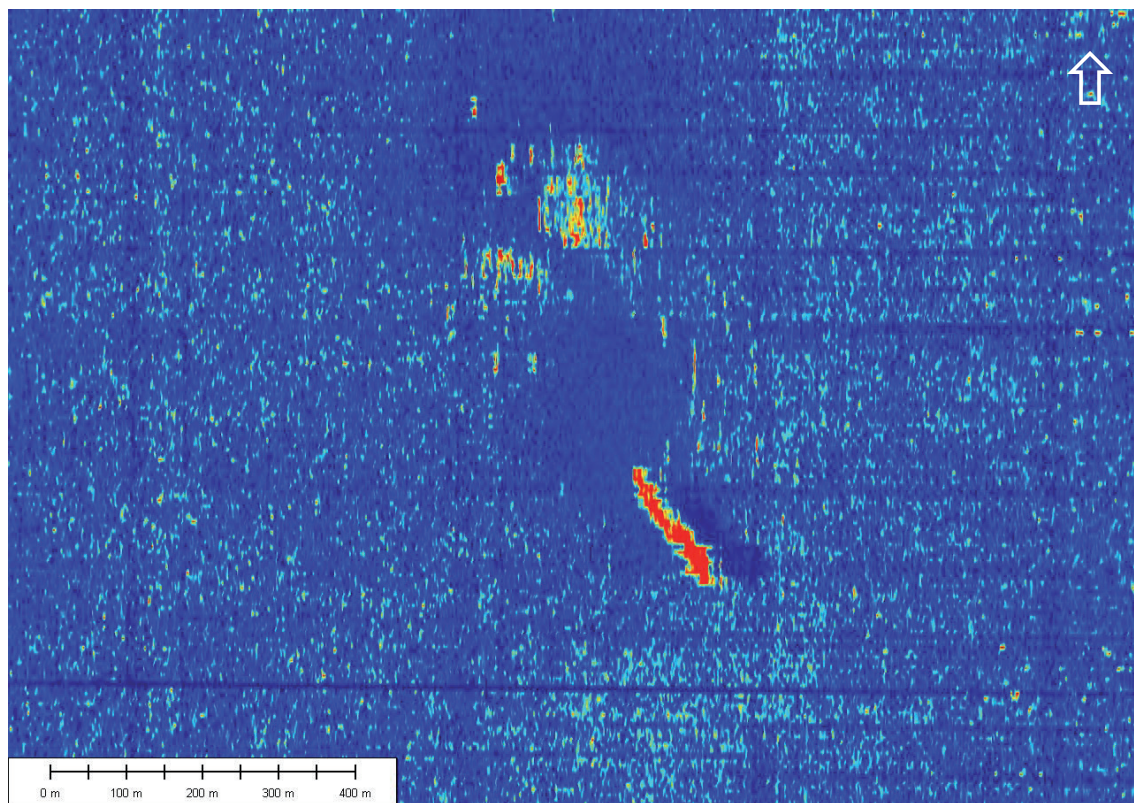


## APPENDIX C1

### HMAS SYDNEY (II) WRECK AND DEBRIS FIELD

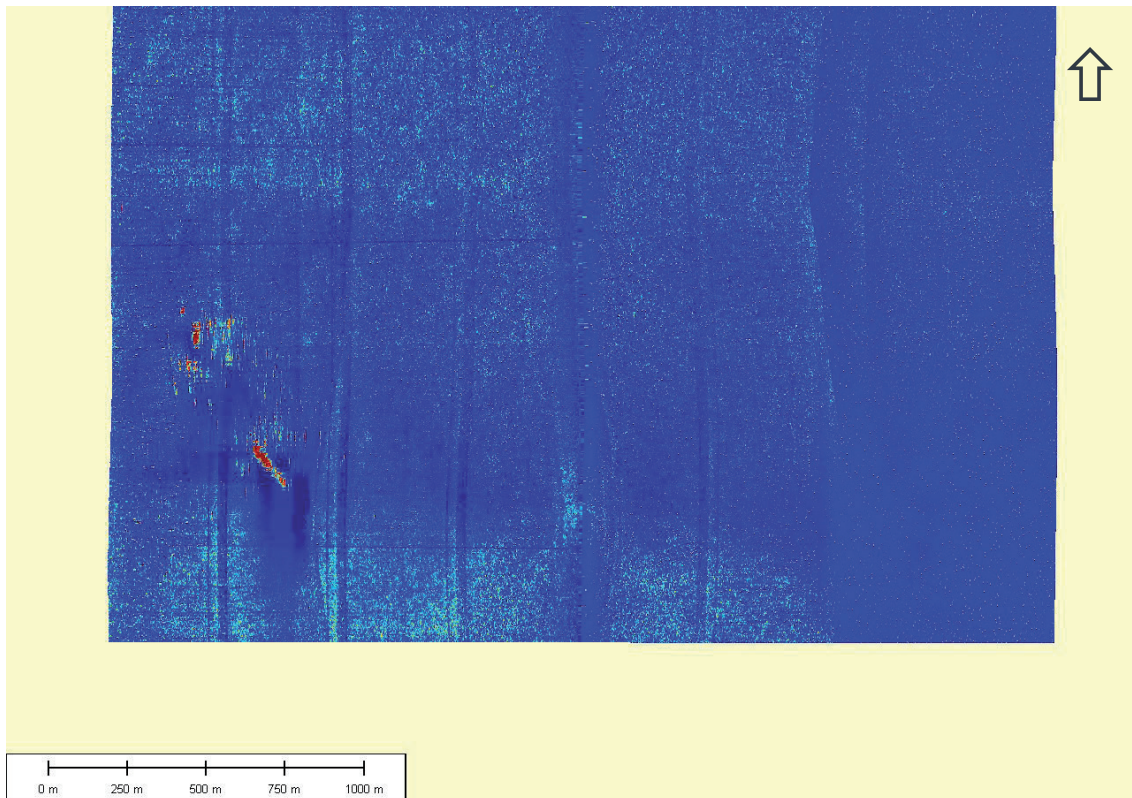


6km full swath sonar image showing HMAS Sydney (II) wreck site.

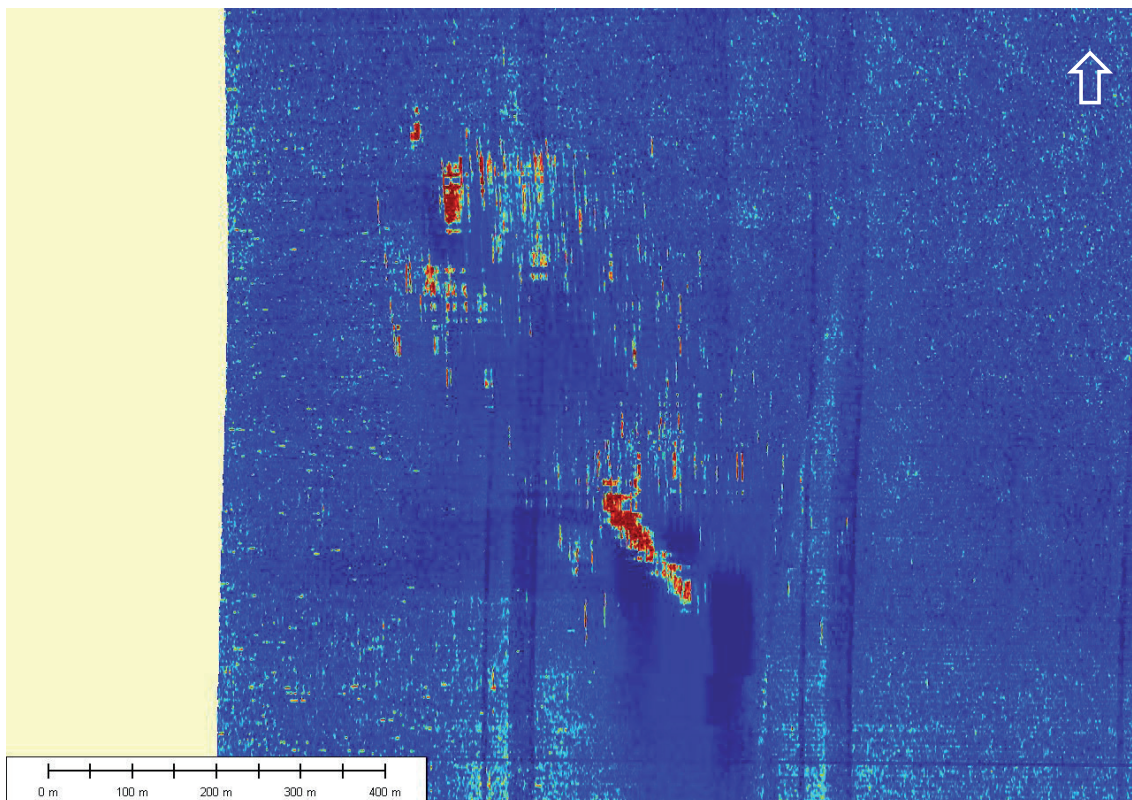


Enlarged 6km swath sonar image showing HMAS Sydney (II) wreck site.



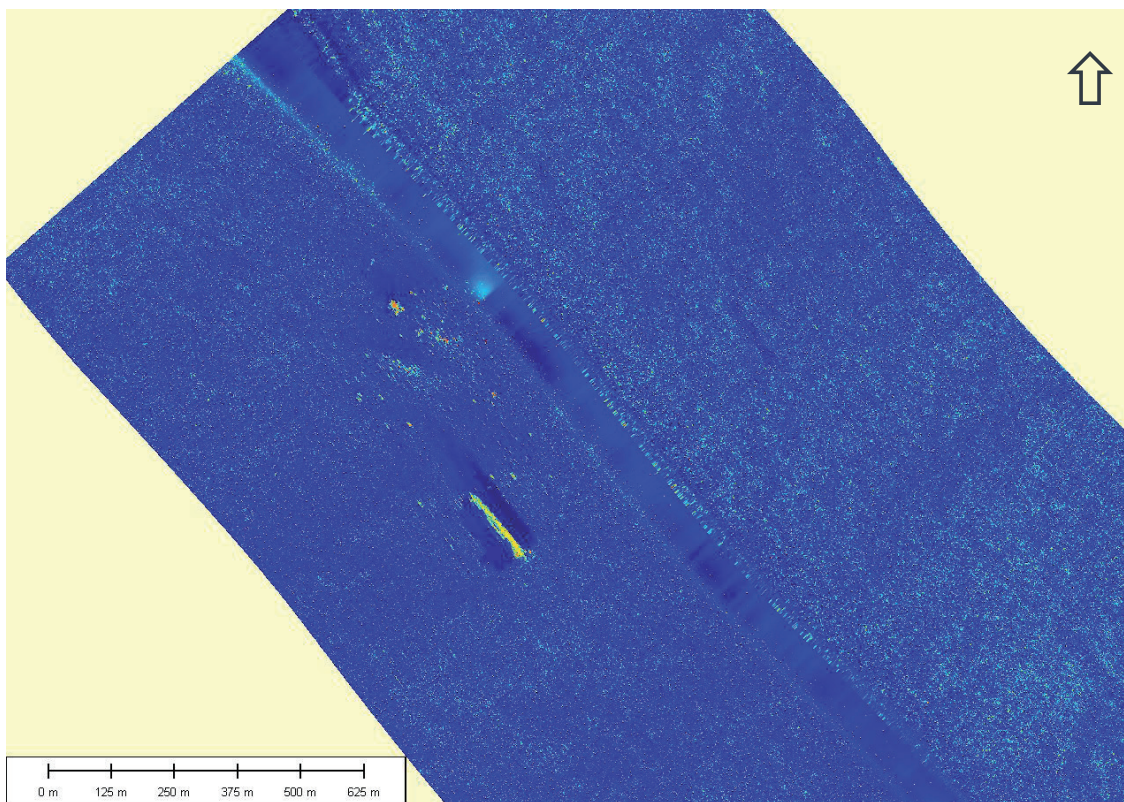


3km full swath sonar image showing HMAS *Sydney* (II) wreck site.

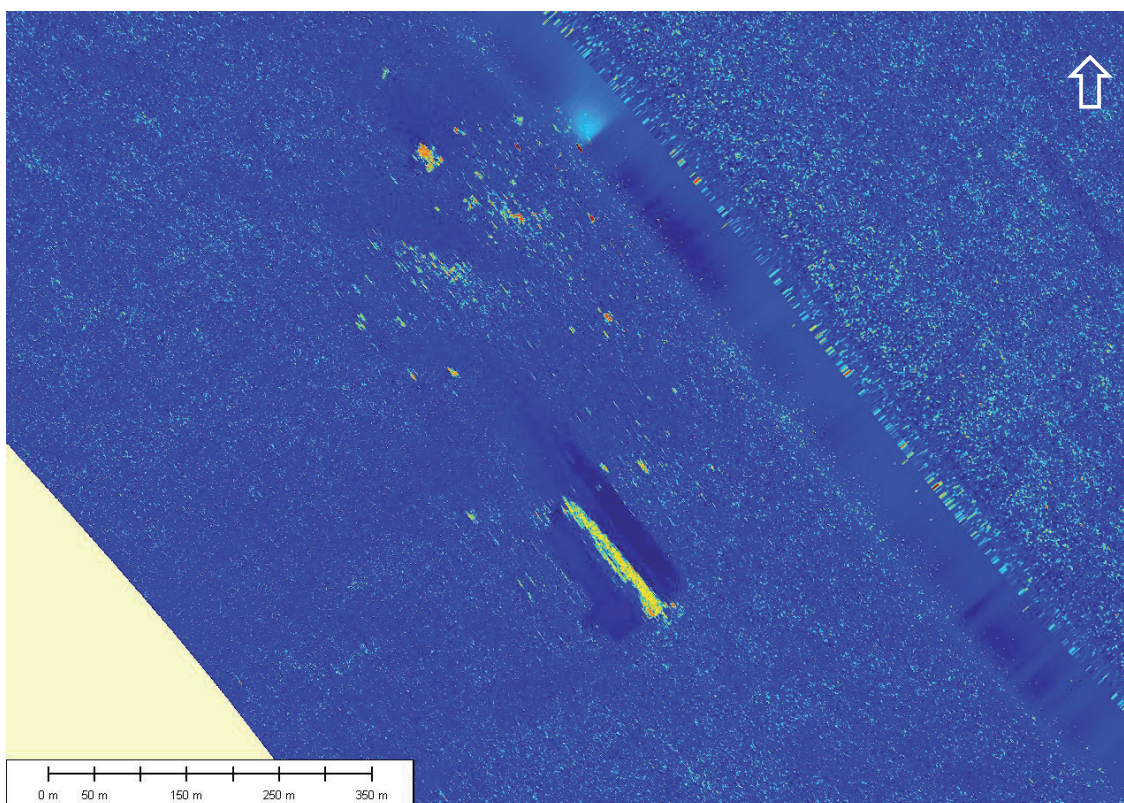


Enlarged 3km swath sonar showing HMAS *Sydney* (II) wreck site.



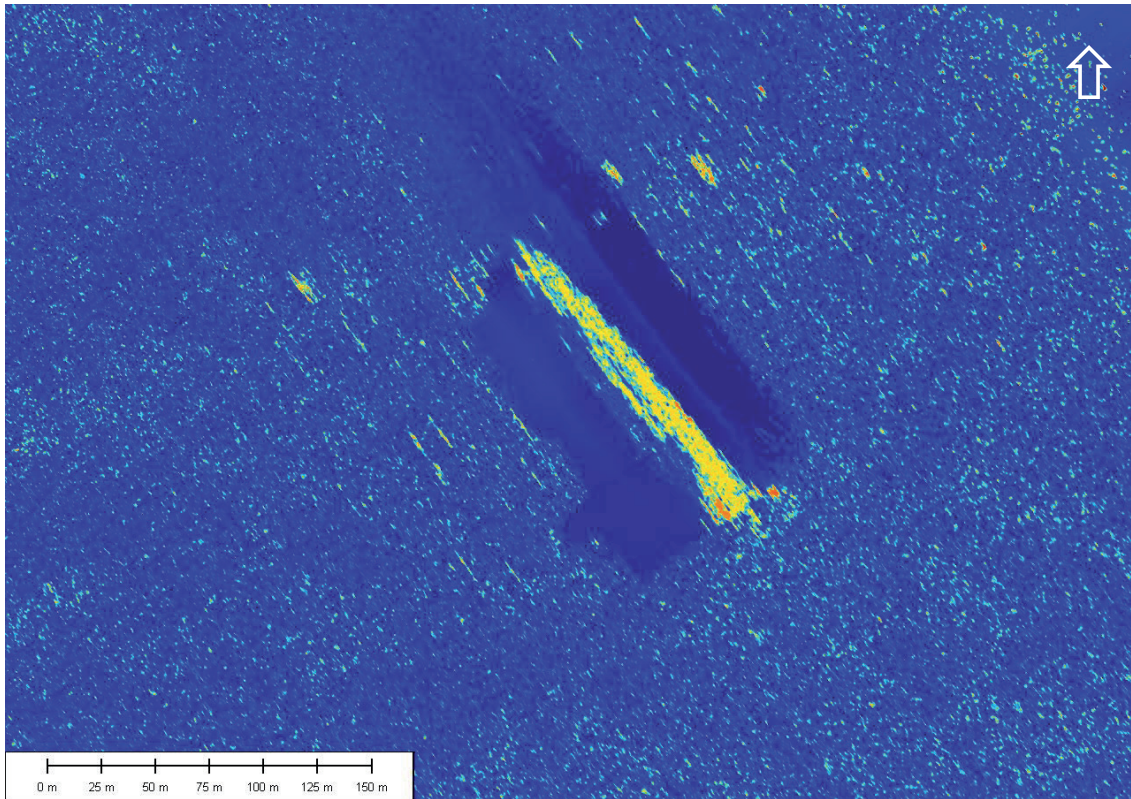


1.5km full swath sonar image showing HMAS Sydney (II) wreck site.

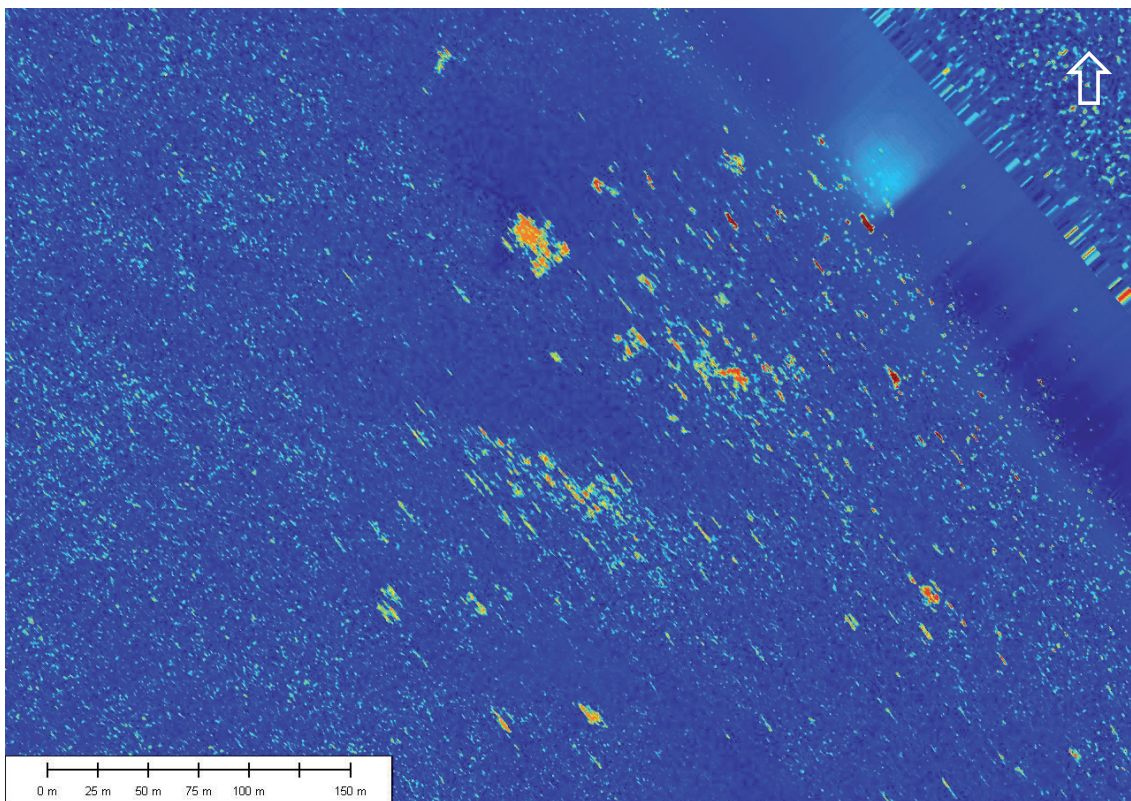


Enlarged 1.5km swath sonar image showing HMAS Sydney (II) wreck site.



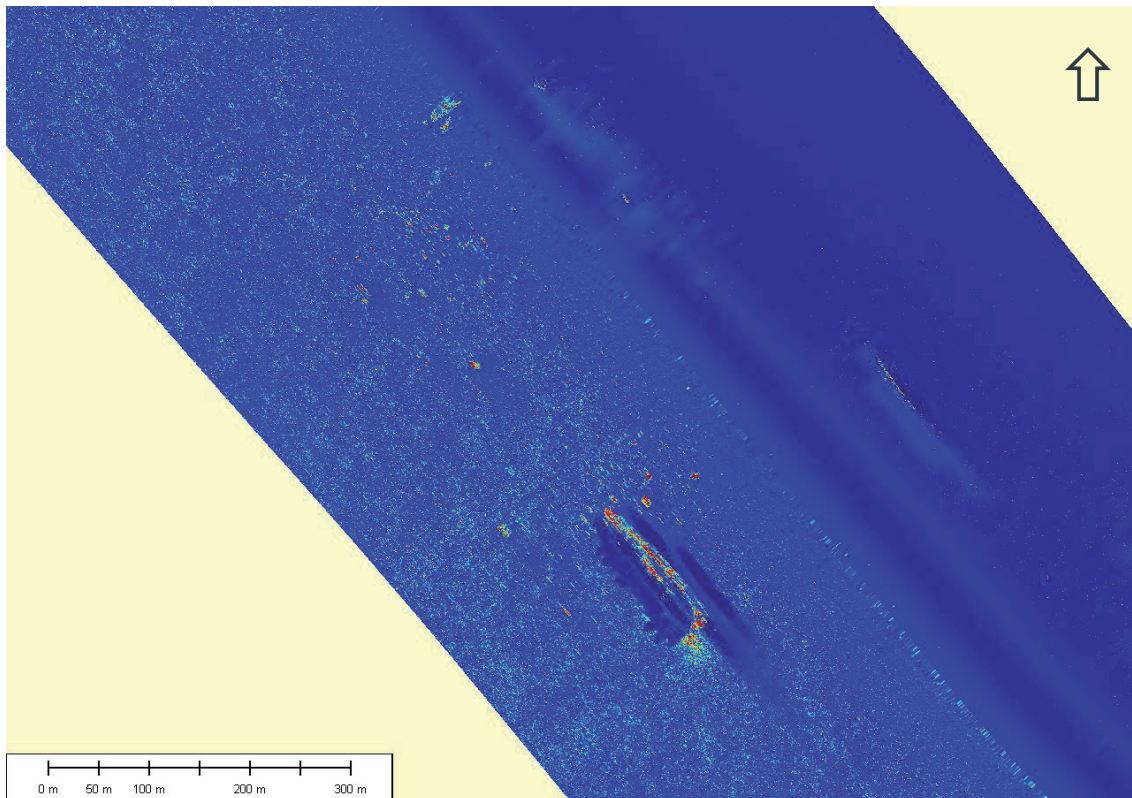


Enlarged 1.5km swath sonar image showing HMAS *Sydney* (II) wreck.

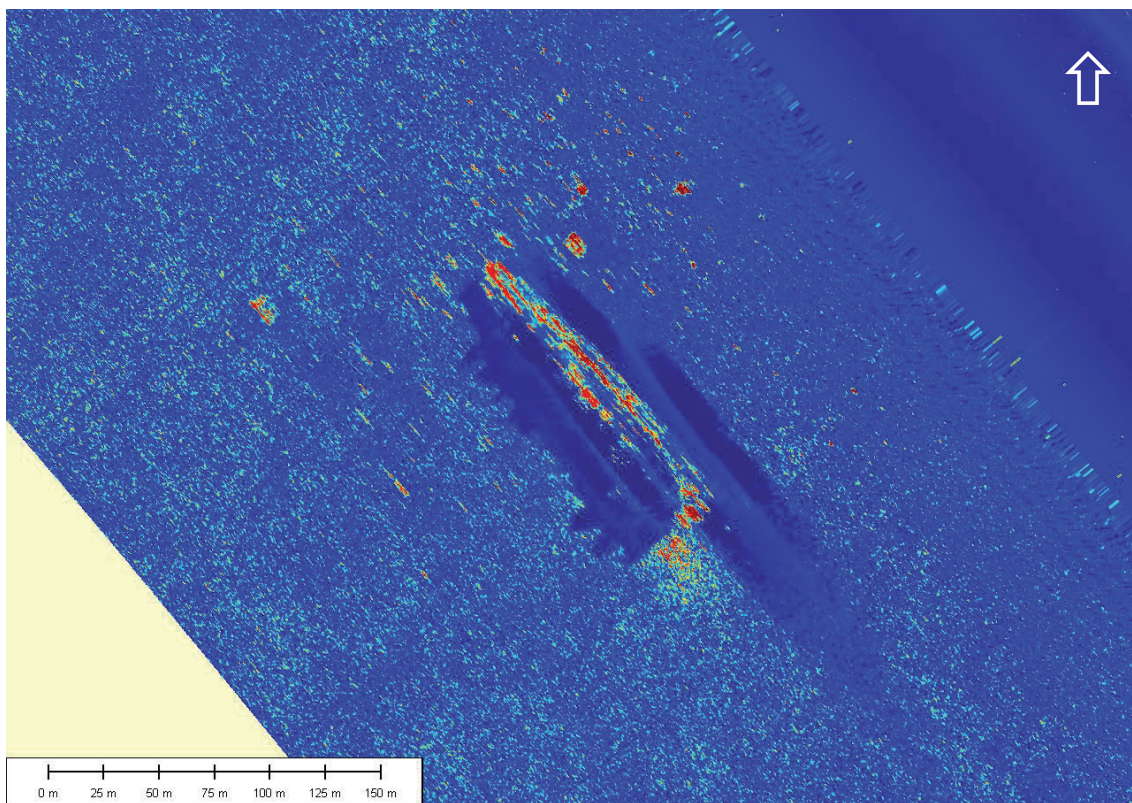


Enlarged 1.5km swath sonar image showing HMAS *Sydney* (II) wreck site debris field.



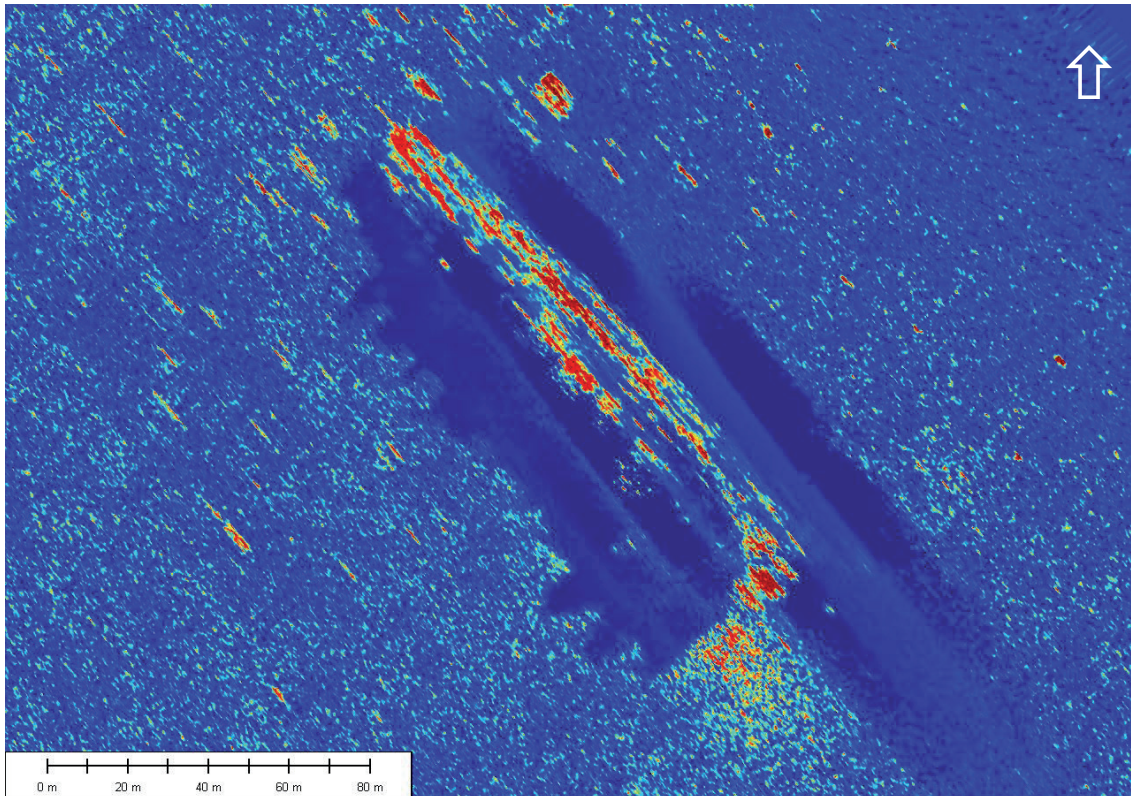


750m full swath sonar image showing HMAS *Sydney* (II) wreck site.

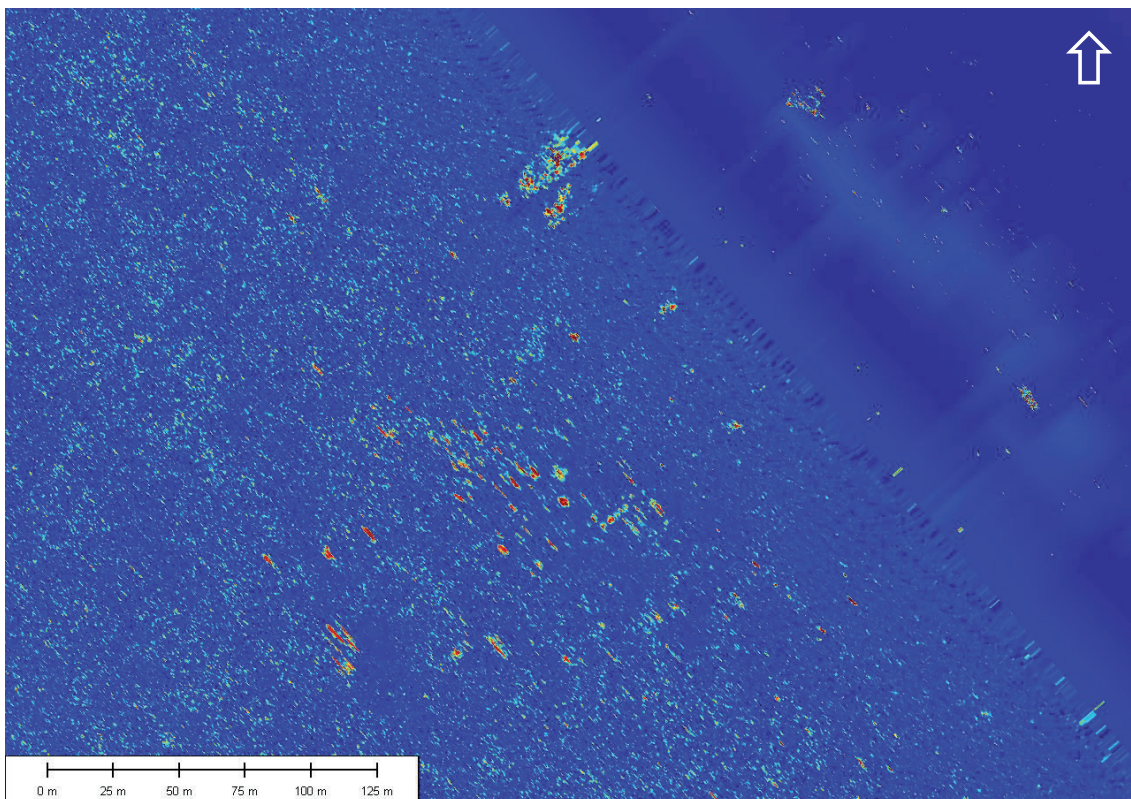


Enlarged 750m swath sonar image showing HMAS *Sydney* (II) wreck site.



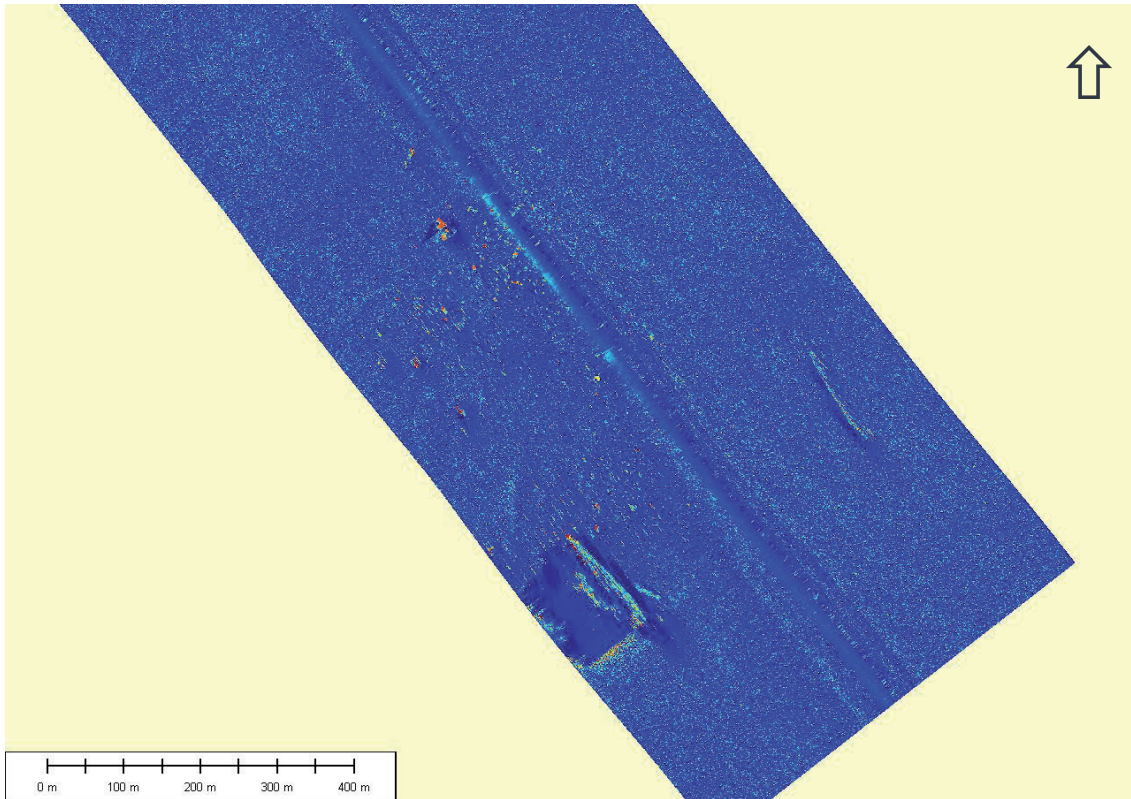


Enlarged 750m swath sonar image showing HMAS *Sydney* (II) wreck.

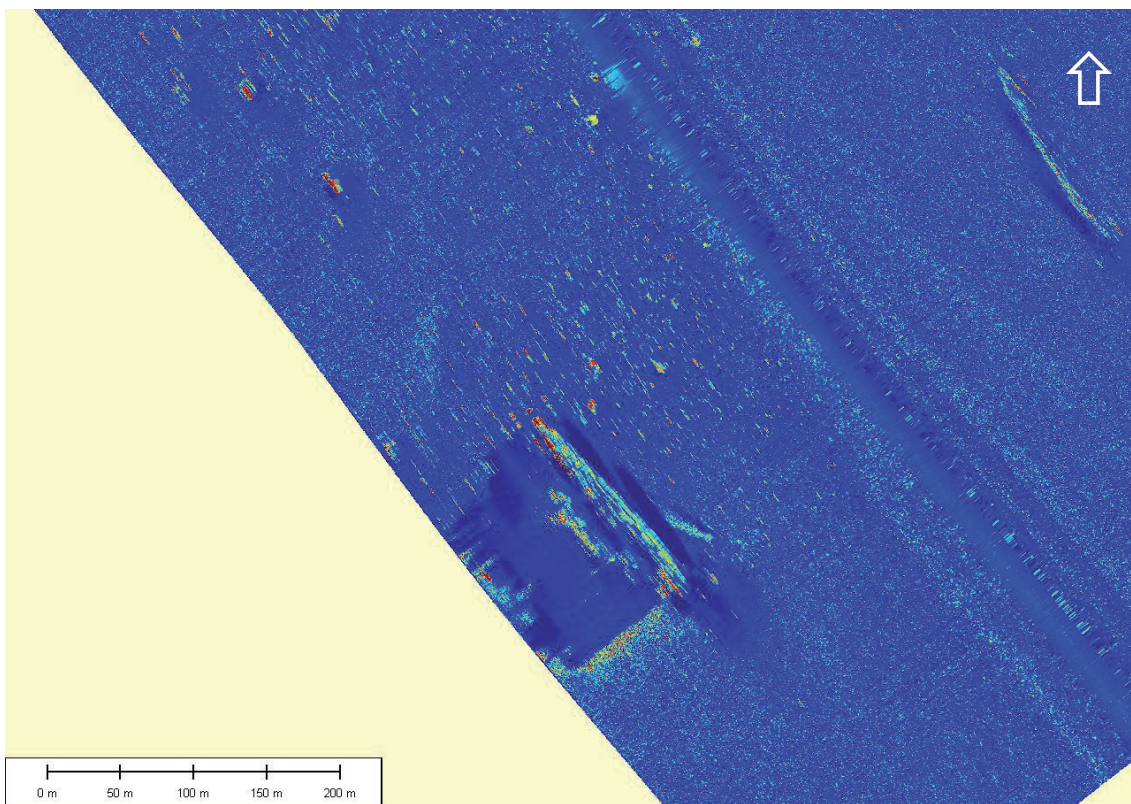


Enlarged 750m swath sonar image showing HMAS *Sydney* (II) wreck site debris field.



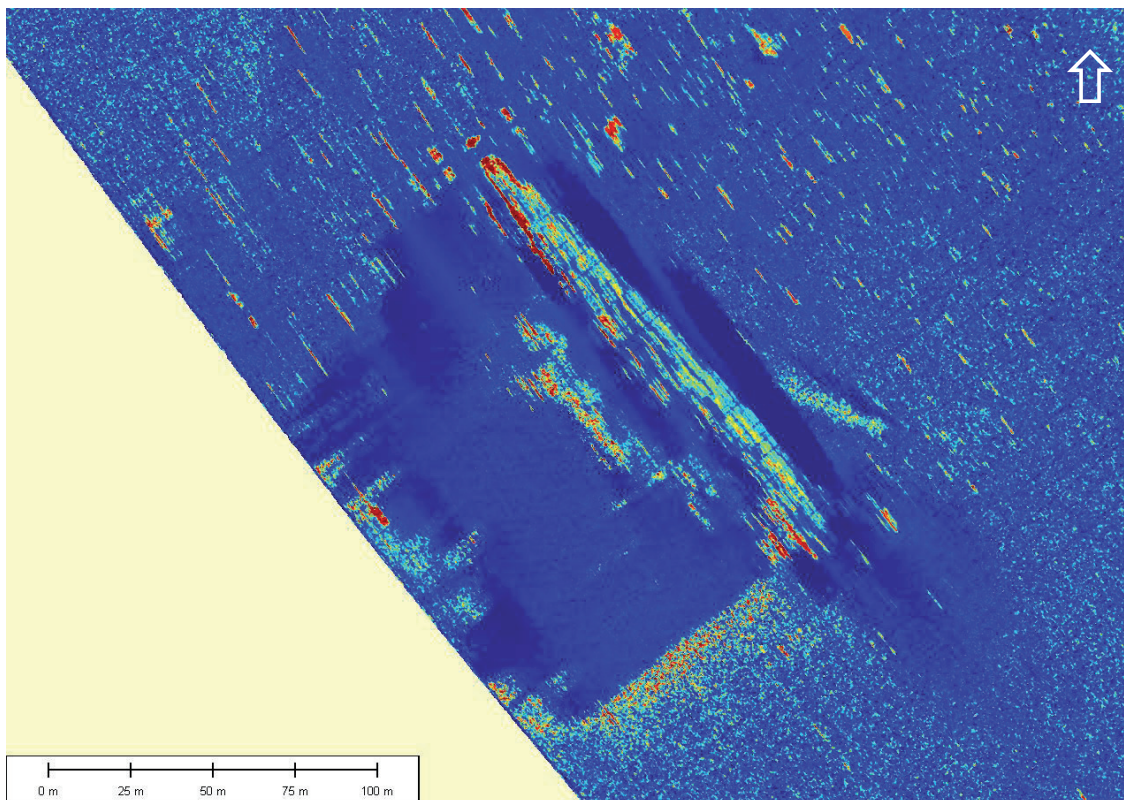


600m full swath sonar image showing HMAS *Sydney* (II) wreck site.

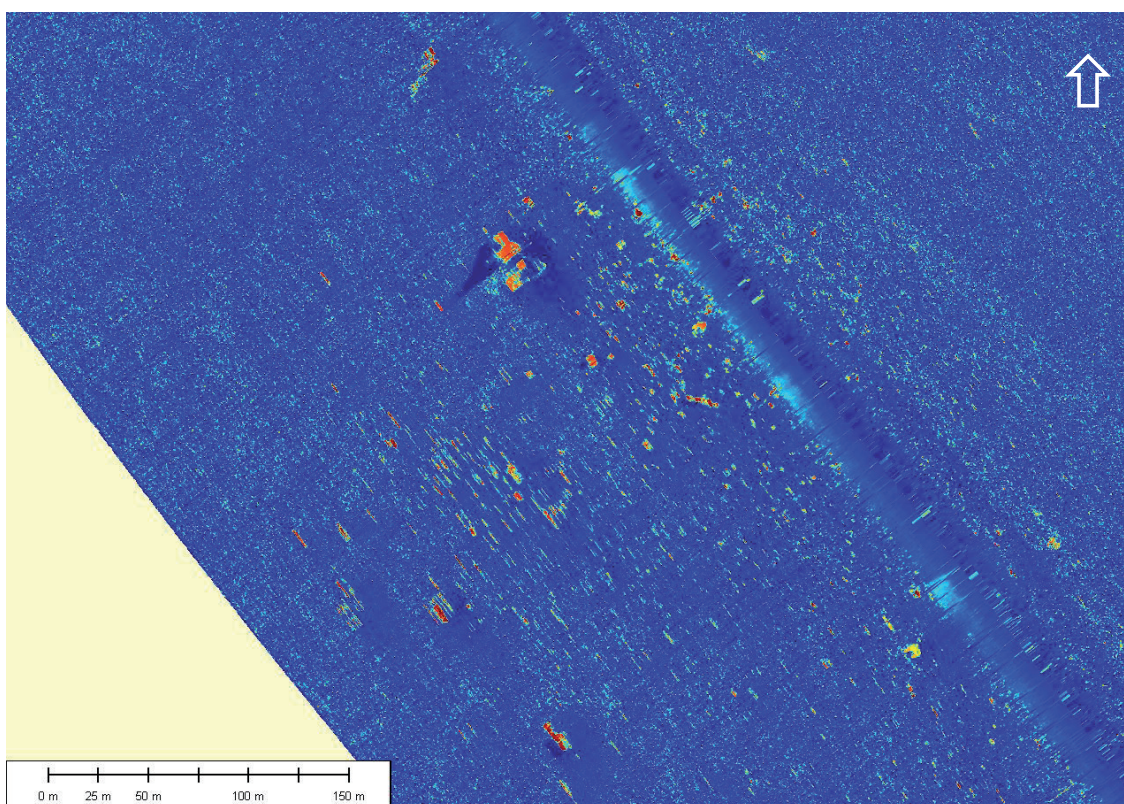


Enlarged 600m swath sonar image showing HMAS *Sydney* (II) wreck site.



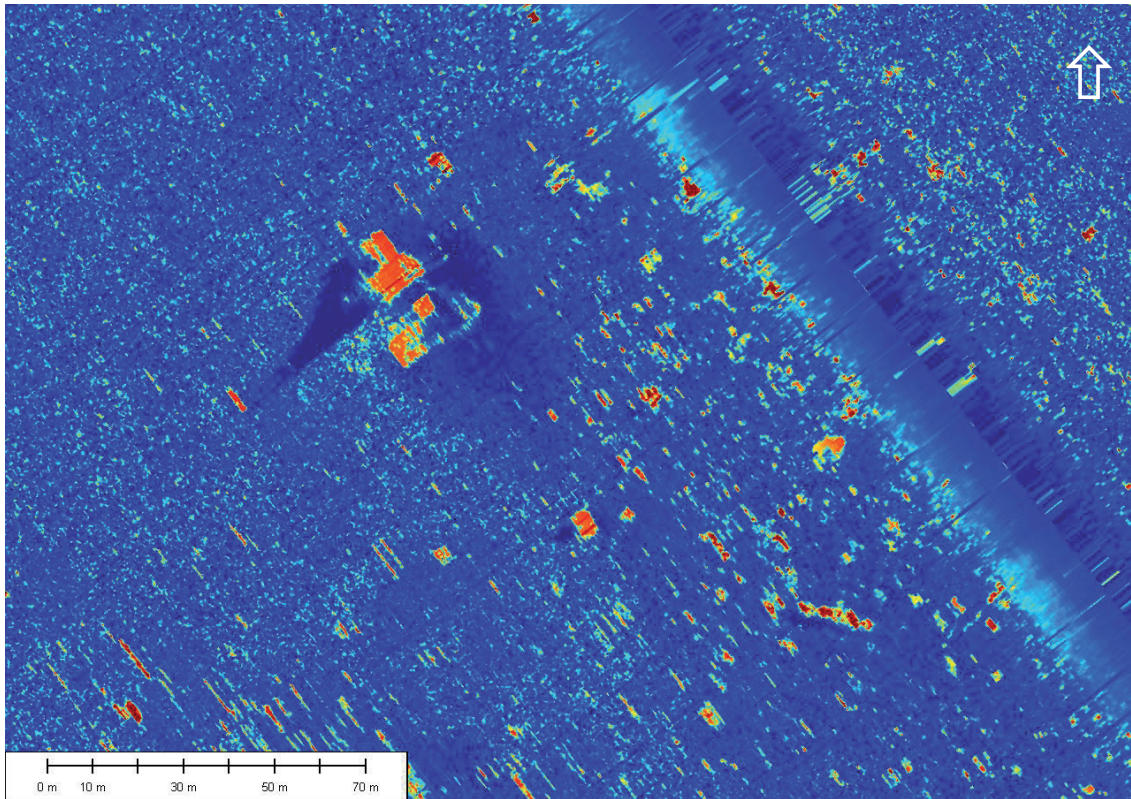


Enlarged 600m swath sonar image showing HMAS *Sydney* (II) wreck site.



Enlarged 600m swath sonar image showing HMAS *Sydney* (II) wreck site debris field with dislodged bow section.





Enlarged 600m swath sonar image showing HMAS *Sydney* (II) wreck site and debris field with dislodged bow section.